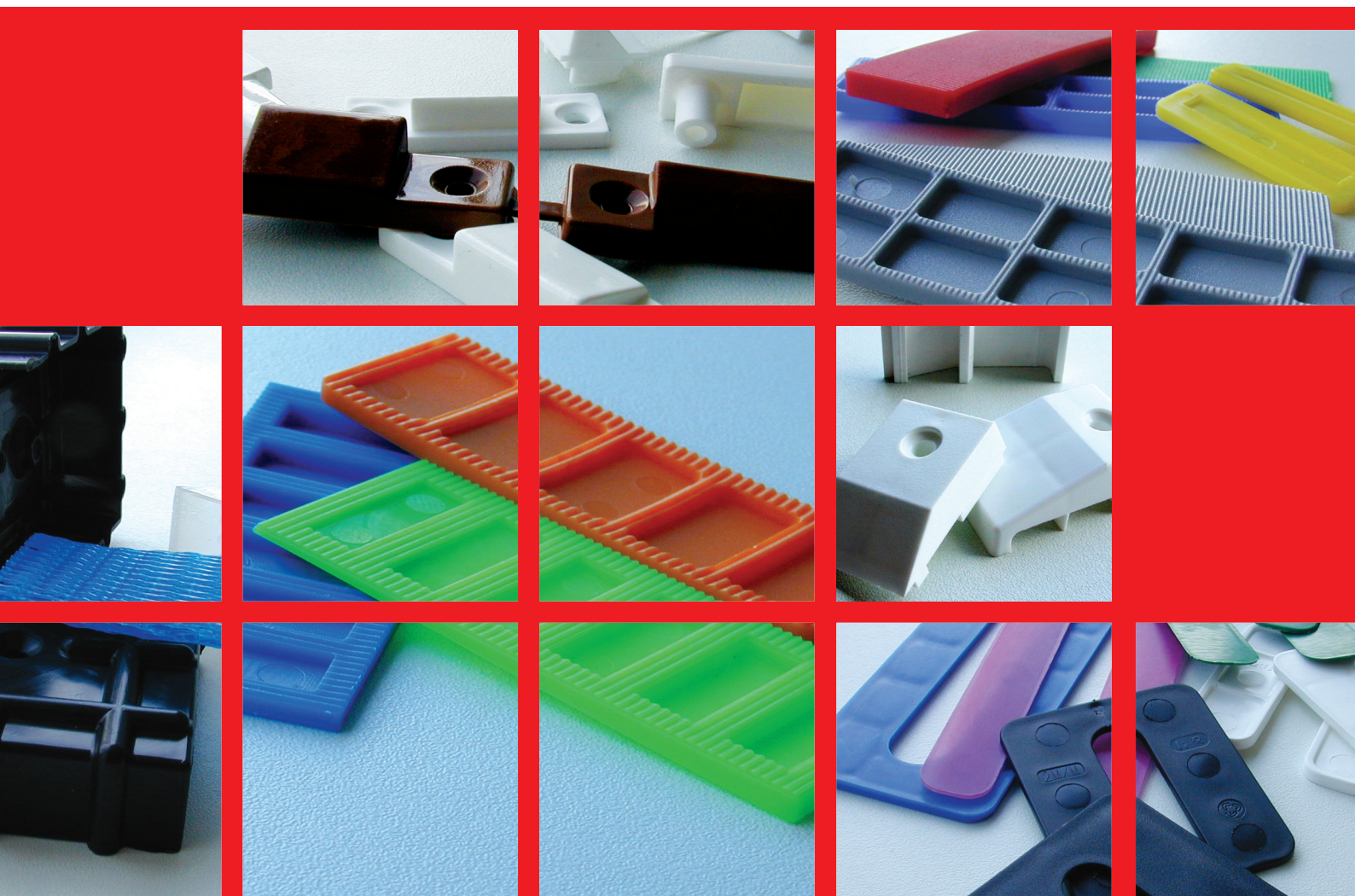




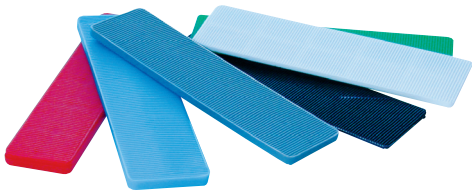
PLASTICPARTSDIRECT

**Window system glazing
accessories direct from
the manufacturer**



**You could save £££'s
by calling us now on 01295 269333**

**• TRADE PRICES • FROM STOCK • NEXT DAY DELIVERY
IN-HOUSE DESIGN & TOOLING SERVICE AVAILABLE**



Flat Packers

Size	Part No.
15 X 3 X 50	0159-000
24 X 1 X 100	0119-011
24 X 2 X 100	0119-012
24 X 3 X 100	0119-013
24 X 4 X 100	0119-014
24 X 5 X 100	0119-015
24 X 6 X 100	0119-016

28 X 1 X 100	0119-001
28 X 2 X 100	0119-002
28 X 3 X 100	0119-003
28 X 4 X 100	0119-004
28 X 5 X 100	0119-005
28 X 6 X 100	0119-006

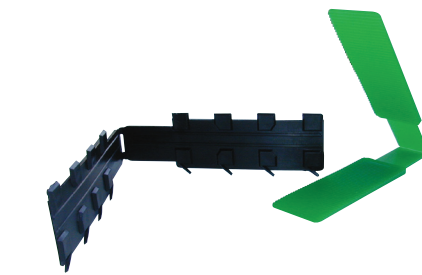
30 X 1 X 100	0119-021
30 X 2 X 100	0119-022
30 X 3 X 100	0119-023
30 X 4 X 100	0119-024
30 X 5 X 100	0119-025
30 X 6 X 100	0119-026

32 X 1 X 100	0119-041
32 X 2 X 100	0119-042
32 X 3 X 100	0119-043
32 X 4 X 100	0119-044
32 X 5 X 100	0119-045
32 X 6 X 100	0119-046

34 x 2 x 100	0119-032
34 X 3 X 100	0119-033
34 X 4 X 100	0119-034
34 X 5 X 100	0119-035
34 X 6 X 100	0119-036

36 X 1 X 100	0119-071
36 X 3 X 100	0166-062
36 X 6 X 100	0166-027

44 x 1 x 100	0119-075
44 X 3 X 100	0166-064



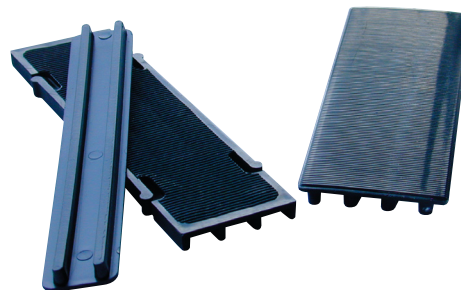
Flexi Corner Wedges

Size	Part No.
Flexi Wedge 28 x 1-3	0166-020
Flexi Wedge 34 x 1-3	0166-001
Flexi Wedge Euro Logik	0166-028
Flexi Wedge SAPA	0236
Flexi Wedge Halo System 10	0166-028



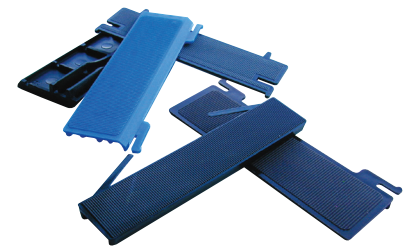
Frame Packers

Size	Part No.
50 X 100 X 3mm	0258-001
50 X 100 X 1.5mm	0258-002
50 X 62 X 2mm	0258-012
50 X 62 X 3mm	0258-013
50 X 62 X 5mm	0258-015



Bridge Packers

Size	Part No.
100 X 15 X 5	0166-021
100 X 20 X 5	0166-012
100 X 22 X 5	0166-013
100 X 24 X 5	0166-018
100 X 26 X 5	0166-014
100 X 28 X 5	0265
100 X 32 X 5	0166-015
Suitable for	Part No.
Deceuninck 70	0268
Deceuninck 70	0293
Kommerling 070	0293
Synseal Legend 70	0293
Rehan 706	0293
Liniar Flush Frame	0361



Profile Specific Bridge Packers

Suitable for	Part No.
Aluplast (high)	0293
Aluplast clip in	0268
Deceuninck 70	0268
Duraflex 65/70	0166-029
Duraflex 70	0265
Eurocell	0119-062
Eurocell EuroLogik clip in	0268
Eurocell EuroLogik clip in (high)	0293
Eurocell Ultimate 70 clip in	0292
KBE	0166-011
Kommerling 070	0268
LB Sheerframe	0265
LB Sheerframe 8000 series clip in	0268
Liniar clip in	0293
Liniar Flush Frame	0361
Permacell 70mm	0293
Plastmo 62mm black	0273-001
Plastmo 62mm Blue	0273-002
Plastmo 70	0268
Profile 22 Casement clip in	0234-002
Profile 22 Sash clip in	0234-001
Profine System	0293
Rehau 706 clip in	0268
Rehau Bi-Fold Doors	0268-001
Rehau Total 70	0293
Rehau Patio	0234-002
Rehau Tritec Sash clip in	0218
Rehau Tritec Casement clip in	0240
Selecta	0166-005
Spectus Elite 63 AM03	0297
Spectus Elite 70 BM03	0262
Synseal Legend 70	0268
Synseal Shield Offset 30x100x6	0119-027
Synseal Synerjy	0119-027
Veka Bridge	0119-027
Veka Matrix 58 clip in	0119-028
Veka Matrix 70 clip in	0166-005
Veka Matrix 70 F/S clip in	0166-005
WHS Halo Eclipse/Esthetique	0166-063
WHS Halo Elitis clip in	0166-025
WHS Halo Rustique & System 10	0166-015

Miscellaneous

Description	Part No.
Universal Transit Handle Protector	0403



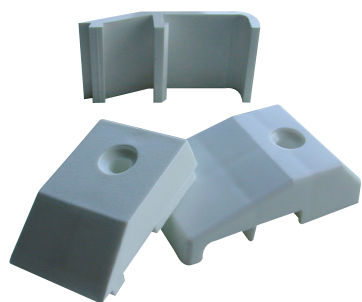
PLASTICPARTSDIRECT

All trade names used are for descriptive purposes only and do not imply any affiliation to the named companies.



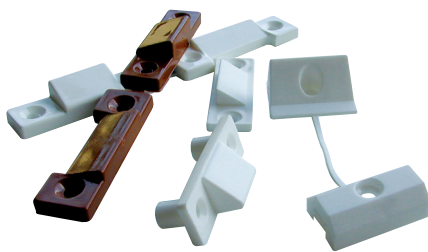
Wedge Packers

Size	Part No.
60 X 24 1-3mm	0166-24601-3
60 X 24 3-5mm	0166-24603-5
60 X 24 4-6mm	0166-24604-6
80 X 26 3-5mm	0166-024
80 X 28 1-3mm	0166-016
80 X 28 2-4mm	0166-009
80 X 28 3-5mm	0166-017
80 X 28 4-6mm	0166-010
80 X 30 3-5mm	0166-022
80 X 32 1-3mm	0166-006
80 X 32 2-4mm	0166-002
80 X 32 3-5mm	0166-026
80 X 34 1-3mm	0166-003
80 X 34 2-4mm	0166-007
80 X 34 3-5mm	0166-008
80 X 36 1-3mm	0166-023



Run Up Blocks

Suitable for	Part No.
Duraflex	0328
Eurcell	0275
Eurocell EuroLogik	0298
Kommerling	0303
Kommerling	0235
LB Sheerframe	0264
Liniar	0315
Plastmo 62mm	0274
Plastmo 72mm	0278
Profile 22 clip in	0198
Rehau S706	0359
Rehau Tritec clip in	0235
Spectus Elite BM01	0281
Spectus Elite BM12	0285
Veka Matrix screw in	0187
WHS Halo Rustique & System 10	0331
Rehan S706	0359



Locking Wedges

Suitable for	Part No.
Duraflex	0280-002
Eurocell EuroLogik	0299
Kommerling	0302
LB Sheerframe	0188
Liniar	0299
Plastmo	0280
Profile 22	0181
Spectus Elite 70 BM02	0285
Synseal shield & Synerjy	0299
Veka	0188
Veka Egress	0186



Glazing Paddles

Size	Part No.
Red	0190-RED
Blue	0190-BLU
White	0190-WHT

Cill End Caps

Suitable for	Part No.
Profile 22	0344

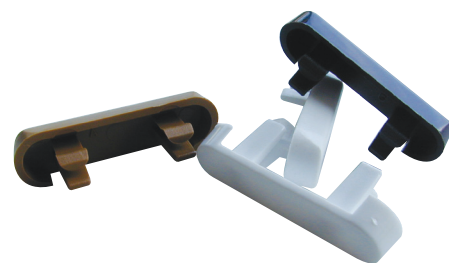
Fold Over Screw Caps

Part No.	Description	A	B	C
0152L	Large foldover screw cover	17mm	6.5mm	5mm
0152S	Small foldover screw cover	12.5mm	4.5mm	4mm

Push In Screw Caps

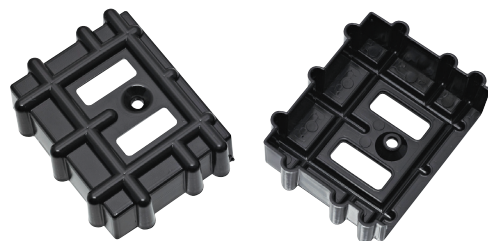
Part No.	Description	A	B	C
0153S	Small push in screw cover	10mm	6mm	13mm
0153L	Large push in screw cover	14.5mm	6mm	18.5mm

Available in white, brown and oak



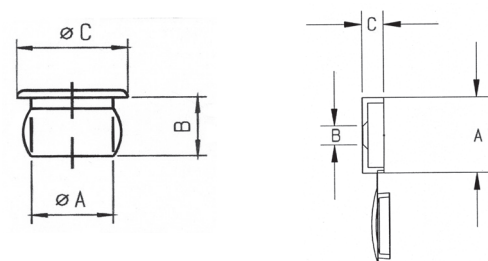
Drain Hole Covers 40mm x 12mm

Size	Part No.
Rectangular - Black	0151 Black
Rectangular - White	0151 White
Rectangular - Brown	0151 Brown
Rectangular - Oak	0151 Oak
Rectangular - Old English White	0151 OE White
Rectangular - Vanilla	0151 Vanilla
Rectangular - Grey	0151 Grey
Rectangular - RAL7016 - Grey	0151
Rectangular - RAL7038 - Grey	0151
Rectangular - Chartwell Green	0151



Corner Frame Protectors

Size	Part No.
30mm Corner Protector	0307
40mm Corner Protector	0308
60mm Corner Protector	0225
70mm Corner Protector	0191
75mm Corner Protector	0193
130mm Corner Protector	0342
150mm Corner Protector	



Call us now on **01295 269333**
or email us at **sales@plasticpartsdirect.co.uk**

All trade names used are for descriptive purposes only and do not imply any affiliation to the named companies.



Faxback on **01295 273276**
or email your enquiry to

PLASTICPARTSDIRECT **sales@plasticpartsdirect.co.uk**

If you would like us to quote on any of the items listed in this catalogue please list your monthly usage and we will be pleased to confirm our pricing. **You could be pleasantly surprised at the savings we can offer!**

Enquiry **Order** (Please tick accordingly)

Flat Packers	Size	Monthly Usage
1mm		
2mm		
3mm		
4mm		
5mm		
6mm		

Drain Hole Covers

Run Up Blocks
System

Bridge Packers
System
1
2

Locking Wedges
System

Corner Protectors
Size

.....
We also offer a complete in-house design and tooling service, to produce parts to your own specification including 3D modelling and rapid prototyping.

Please list below any other plastic components that you would like us to quote on.

Description

Contact Details
Name:
Company:
Address:
Tel:
Email:

Plastic Parts Direct Ltd

Unit 6 | Thorpe Drive | Banbury | Oxfordshire | OX16 4UZ

T: 01295 269333 **F:** 01295 273276 **E:** sales@plasticpartsdirect.co.uk

W: www.plasticpartsdirect.co.uk

